



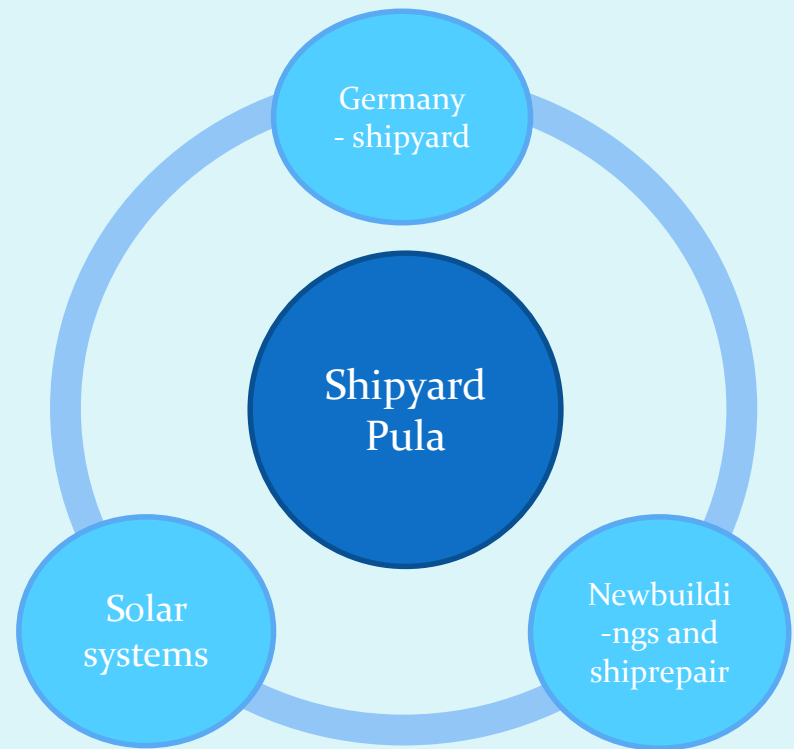
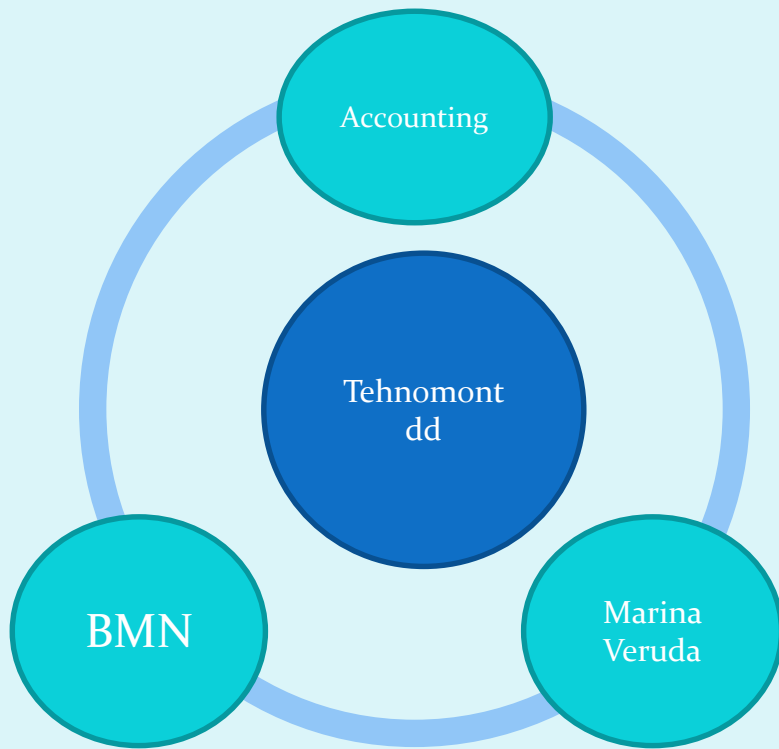
# The Tehnomont Presentation

january 2014.

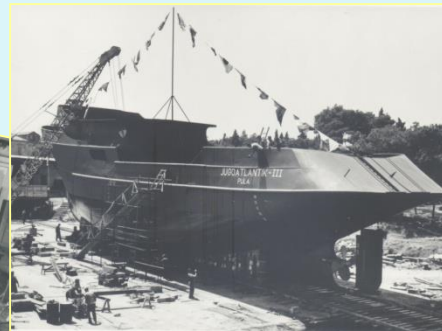


# Introduction to Group and it's activities

# Group structure



- CROATIAN Shipbuilding TRADITION
- TEHNOMONT - TRADITION since 1905



# TEHNOMONT MARINA VERUDA

[www.marina-veruda.hr](http://www.marina-veruda.hr)

- 18 Piers
  - 630 Berths
  - 250 Dry marina places
  - 30t & 10t Cranes
  - Yacht Service
  - Restorant
  - Shops and Diving Center
- 
- Enviromental protection – “BLUE FLAG” 12<sup>th</sup> time in a row



## MARINA VERUDA

A large Bay of Veruda is spreading out towards the south from the town, and this Bay has always been an ideal fishing port. Surrounded by the rich and still untouched Mediterranean vegetation, the Bay represented an ideal place for more and more demanding needs in tourism, that is why the new marina was built up just here at this place: the door that opens for the whole Adriatic.



## RECEPTION

- reception and registration of guests
- reservations and payment of berthing fees
- receiving nautical and service working orders
- money exchange
- the use of Internet, telephone, fax and photo-coping
- rent a car and rent a bike
- the current weather forecast report
- ATM machine



## RESTAURANT

In the marina you can find a restaurant-pizzeria Volaria and panoramic skipper bar Volaria.

You can enjoy in a rich variety of pizza, pasta, fish, meat and grilled meals in a pleasant ambience of restaurant-pizzeria Volaria.

Skipper-bar Volaria has a beautiful view where you can see the boats come and go right at the entrance in the marina.



## ADDITIONAL CONTENTS

In the marina there is a grocery store, a chandlery shop, floating gas station and diving club.

During the summer months there is also a small bakery shop open, where you can find daily fresh bread and other baked products, a stand with the fresh fruit and vegetables, and a newsstand where you can buy newspapers and magazines.



## NAUTICAL SERVICE, BOAT MAINTENANCE AND REPAIRS

Nautical service includes: boat lifting and launching, boat hull washing, antifouling coatings for hull protection, hull polishing.

The marina has two cranes 10tons and 30tons.

Marina Veruda has it's own service for the maintenance and repair of vessels, and it's educated and licensed personnel will give you technical advice and help regarding engine repairs and maintenance and along with our outside marina partners colaboration, deck, mast and sail repairs.



## CHARTER

Charter service of marina Veruda desposes with 5 Elan Impression vessels standing at your service to explore beauty of the Adriatic sea.



# TEHNOMONT BMN

[www.tehnomont.hr](http://www.tehnomont.hr)

- 46.000 m<sup>2</sup>
- 6.000 m<sup>2</sup> – Workshops



## BMN

BMN is a metal processing industry and it is in a production of steel structures for construction, processing industries, shipbuilding industry and the food industry with the ability to perform sheet metal works in construction.



# TEHNOMONT SHIPYARD PULA

[www.tehnomont.hr](http://www.tehnomont.hr)

## Domestic activities

- Shipbuilding & Shiprepair
- Solar heating equipment production
- Labour in other Croatian Shipyard

## Facilities

- 40.000 m<sup>2</sup>
- Two slipways – 50 x 18 m (600 t)
- 3990 m<sup>2</sup> covered area
- Sliding production hall 22 x 45(90) m
- Workshops
- Berths 200 m + 100 m
- Cranes up to 120 t

## Abroad activities

- Labour in German & Italian Shipyards



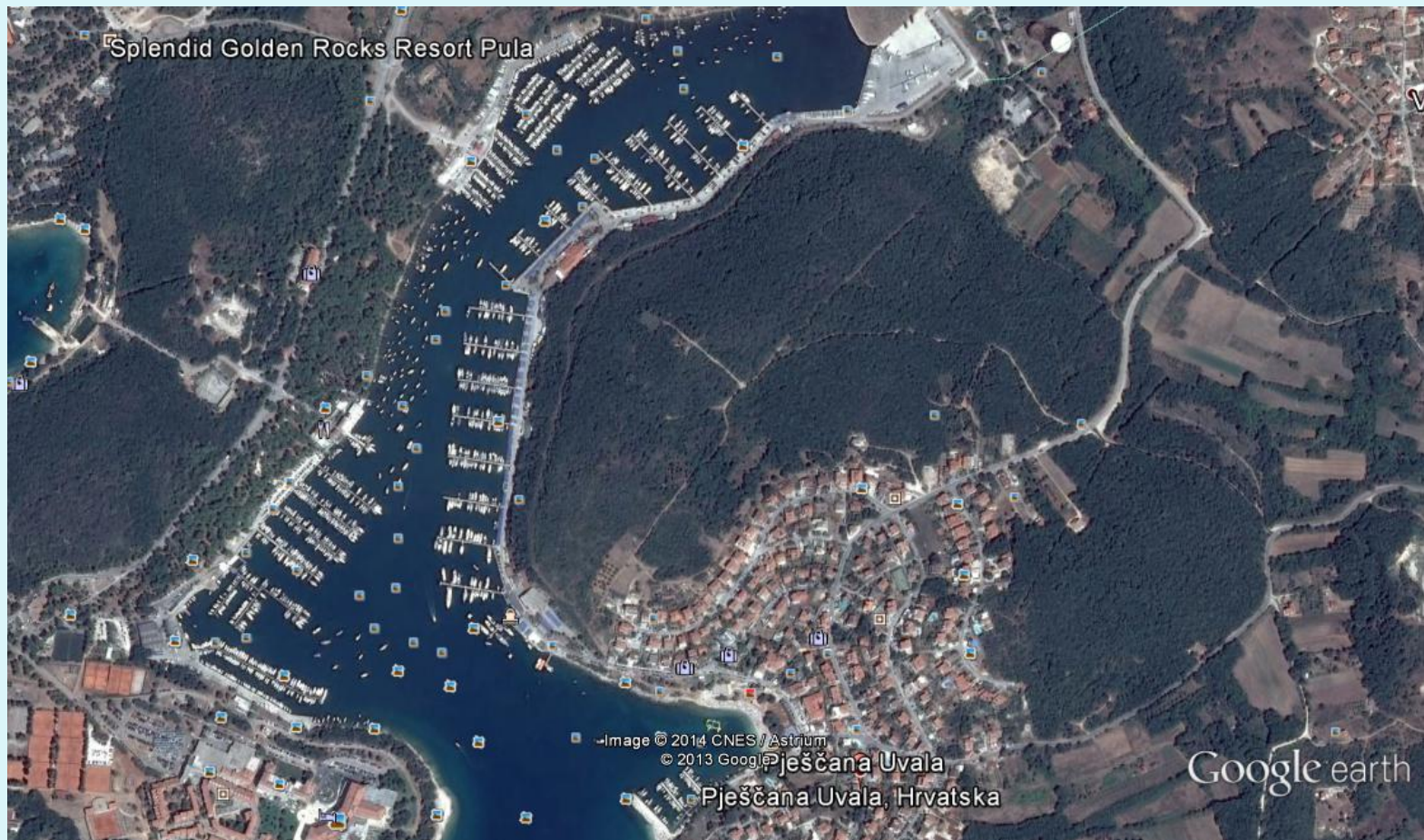
# Tehnomont in Pula's industrial zone



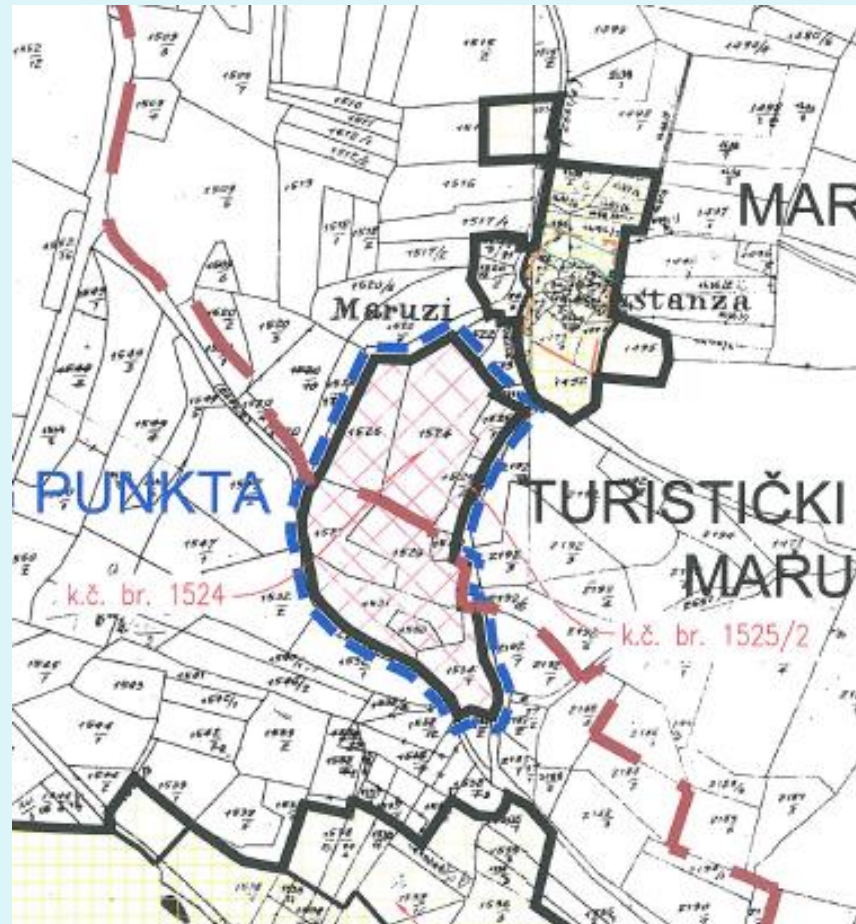
# Shipyard's location



# Nautical Marina



# Urbanized land in touristic zone





# **Shipyard Activities**

## • NEWBUILDINGS

### Aluminium vessels

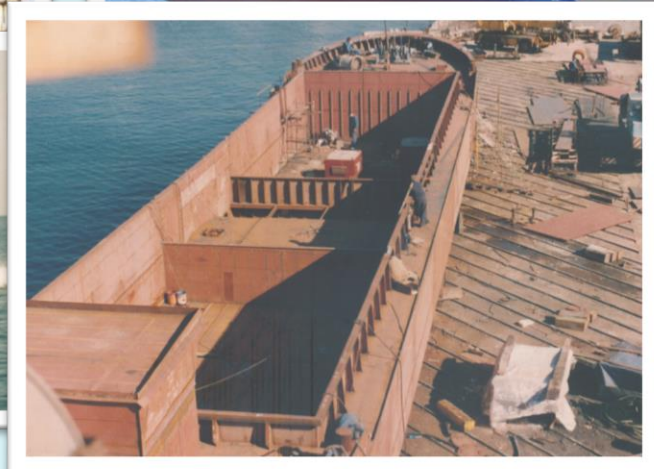
- up to 80 m length
- up to 18 m beam
- up to 600 tonnes weight



## • NEWBUILDINGS

### Steel vessels

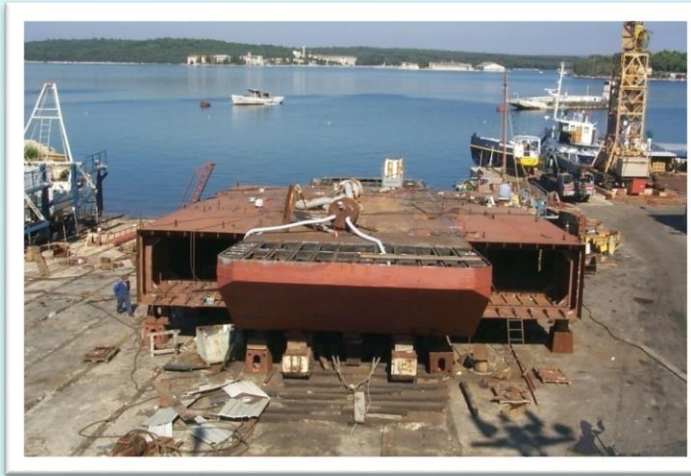
- up to 65 m length
- up to 25 m beam
- up to 1400 tonnes weight



# • SHIPREPAIR & CONVERSIONS

## Hull material

- Steel
- Aluminium
- Wood
- GRP



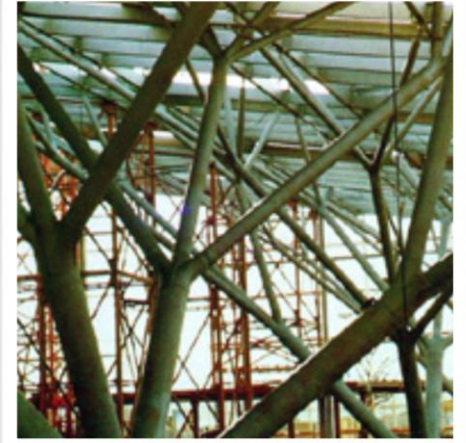
- Assembly of Steel blocks for other Shipyards

Capacity:

- 8.000 – 10.000 tonnes/year



- Steel constructions



- Working in other Croatian Shipyards

- Uljanik – Pula
- 3.MAJ – Rijeka
- Brodosplit – Split
- Brodotrogir – Trogir
- many other



- Working in European Shipyards

- Fincantieri Cantiere Navale – Monfalcone – Italy
- Shipyard Lurssen – Bremen – Germany
- Meyer Werft – Papenburg – Germany
- Flesburger Shipyard FSG – Flensburg – Germany
- many others

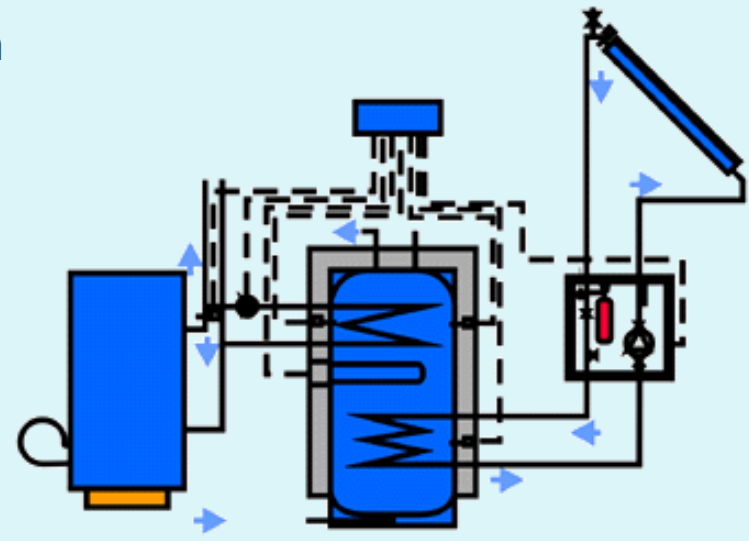
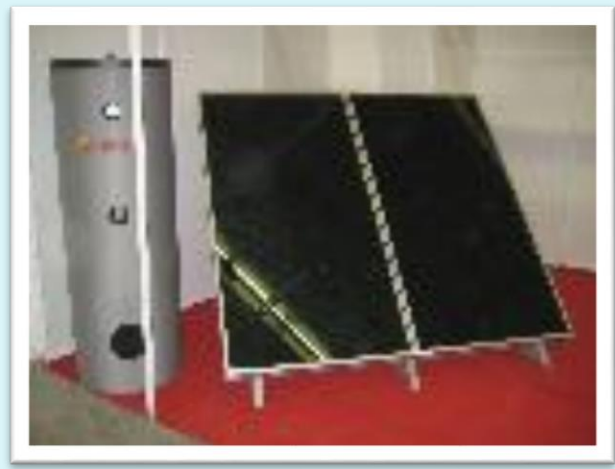


- Working in European Shipyards





- Solar heating Equipment production



# Shipyard Number of employees

	Vocation	No of employees	Total
Management Staff	Top Management	2	17
	Middle Management	15	
Technical Staff	Engineer	8	341
	Lower Management – Foreman	10	
	Ship fitter	110	
	Welder	105	
	Fitter	18	
	Pipe fitter	48	
	Mechanic	14	
	Electrician	4	
	Carpenter	7	
	Turner	2	
	Transport staff	10	
	Other	5	
Administration	Engineer, High educated	6	21
	Other	15	
<b>TOTAL</b>			<b>379</b>



# Reference list – previous projects

## 2012 Projects – P/B “MARINO JAKOMINIĆ”

Type	Patrol Boat
Customer	Croatian Police
Design	Camarc Design
Flag	Croatia
Classification	CRS
Class notation	★ 90A1 3 SD M1 AUT3
Length OA	25,1 m
Beam	3,1 m
Speed	29,3 kn



## 2012 Projects – P/B “MARINO JAKOMINIĆ”



## 2012 Projects – P/B “MARINO JAKOMINIĆ”



## 2012 Projects – P/B “MARINO JAKOMINIĆ”



## 2012 Projects – P/B “MARINO JAKOMINIĆ”



## 2012 Projects – m/v “MILLENNIUM DIAMOND”

Type	Passenger Vessel
Customer	City Cruises London
Design	Brodarski Institut
Flag	Great Britain
Classification	Bureau Veritas
Class notation	⌘ I 5 IN(1,2) Z ⌘ MC
Length OA	37 m
Beam	14,7 m
Capacity	600 Passengers



## 2012 Projects – m/v “MILLENNIUM DIAMOND”



## 2012 Projects – m/v “MILLENNIUM DIAMOND”



## 2012 Projects – m/v “MILLENNIUM DIAMOND”



## 2012 Projects – m/v “MILLENNIUM DIAMOND”



## 2012 Projects – m/v “MILLENNIUM DIAMOND”



# 2012 Projects – m/v “MILLENNIUM DIAMOND”



## 2012 Projects – m/v “MILLENNIUM DIAMOND”



## 2013 Projects – 14m Patrol Boat

Type	Patrol Boat
Customer	Croatian Police
Design	Brodarski institut
Flag	Croatia
Classification	CRS
Length OA	13,85 m
Beam	4,5 m
Speed	31 knots



## 2013 Projects – 14m Patrol Boat



## 2013 Projects – 14m Patrol Boat



## 2010 Projects – 8m Patrol Boat

Type	Patrol Boat
Customer	Romanian Border Police
Design	Bruce Roberts Europe
Flag	Romanian
Classification	Bureau Veritas
Length OA	8,05 m
Beam	3,05 m
Speed	28 knots



## 2010 Projects – 8m Patrol Boat



## 2010 Projects – 8m Patrol Boat



## 2010 Projects – 8m Patrol Boat



## 2010 Projects – 8m Patrol Boat



# Fishing Vessels - 40m Tuna Seiner

Type	Seiner
Customer	CONEX TRADE d.o.o. KALI d.o.o.
Design	Brodarski institut
Flag	Croatia
Classification	CRS
Length OA	40,15 m
Beam	8,65 m
Speed	14,5 knots



## Fishing Vessels – 24m Trawler

Type	Trawler
Customer	Levante, CRO
Design	McDuff Ship Design - Scotland
Flag	Croatia
Classification	CRS
Length OA	23,9 m
Beam	7,2
Speed	8 knots

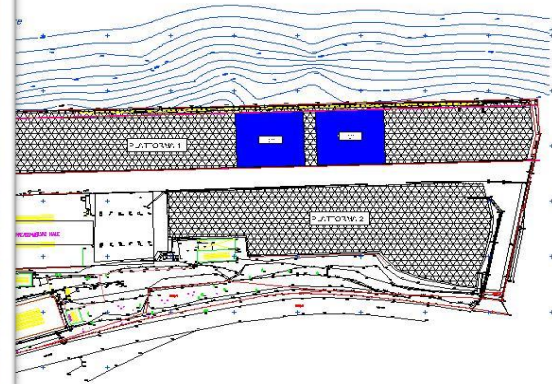


## 43m Ferry

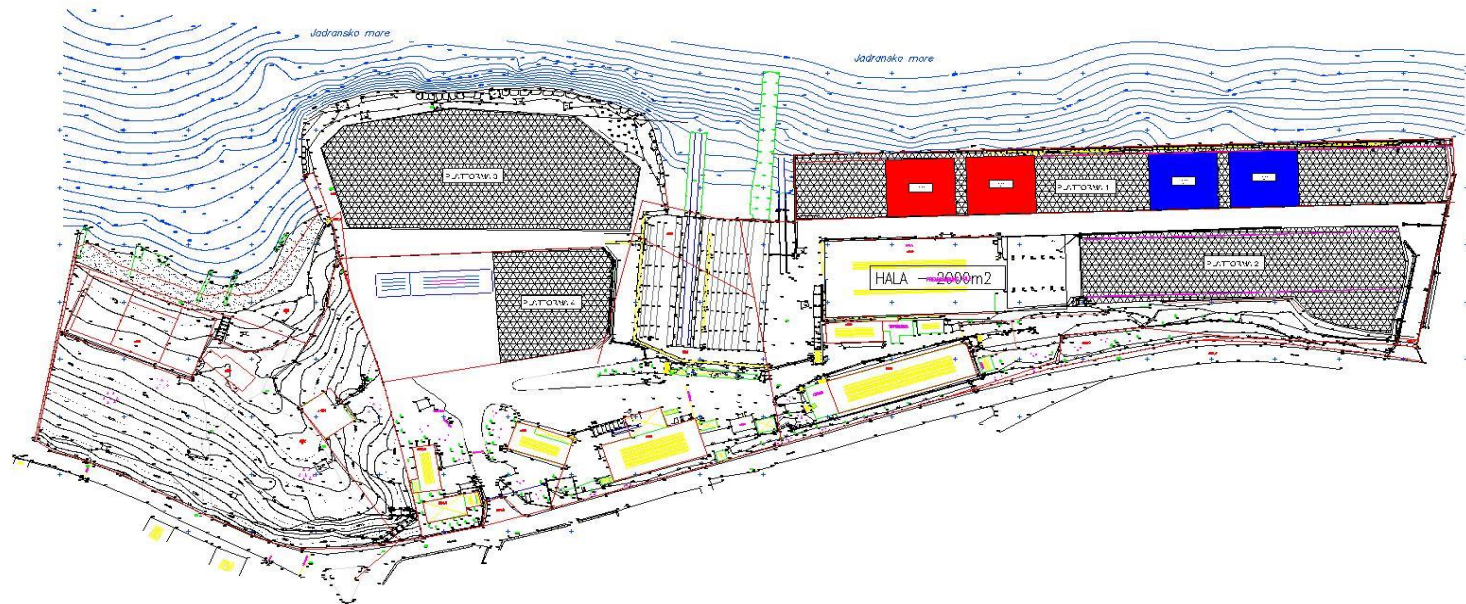
Type	Trawler
Customer	Pomorski saobraćaj . Monte Negro
Design	XIMAR - Croatia
Flag	Monte Negro
Classification	CRS
Length OA	43,7 m
Beam	15 m
Speed	11 knots



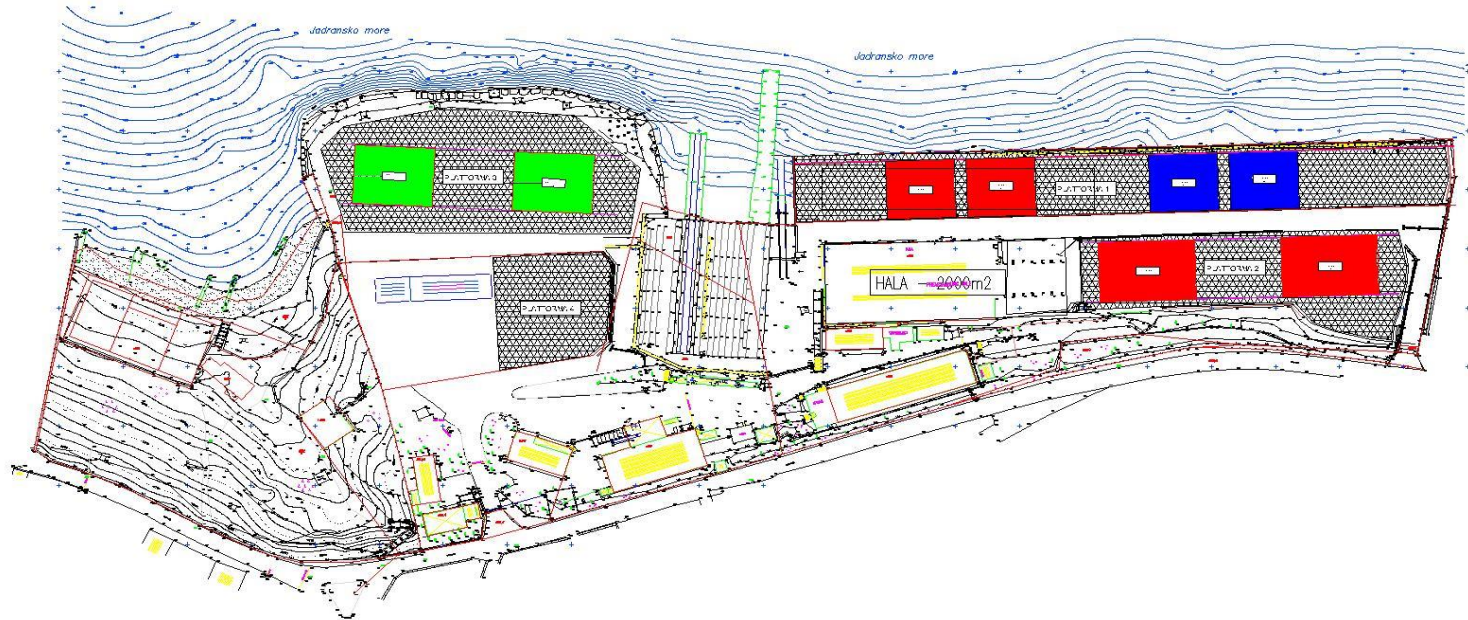
# Building facilities



# Building facilities



# Building facilities

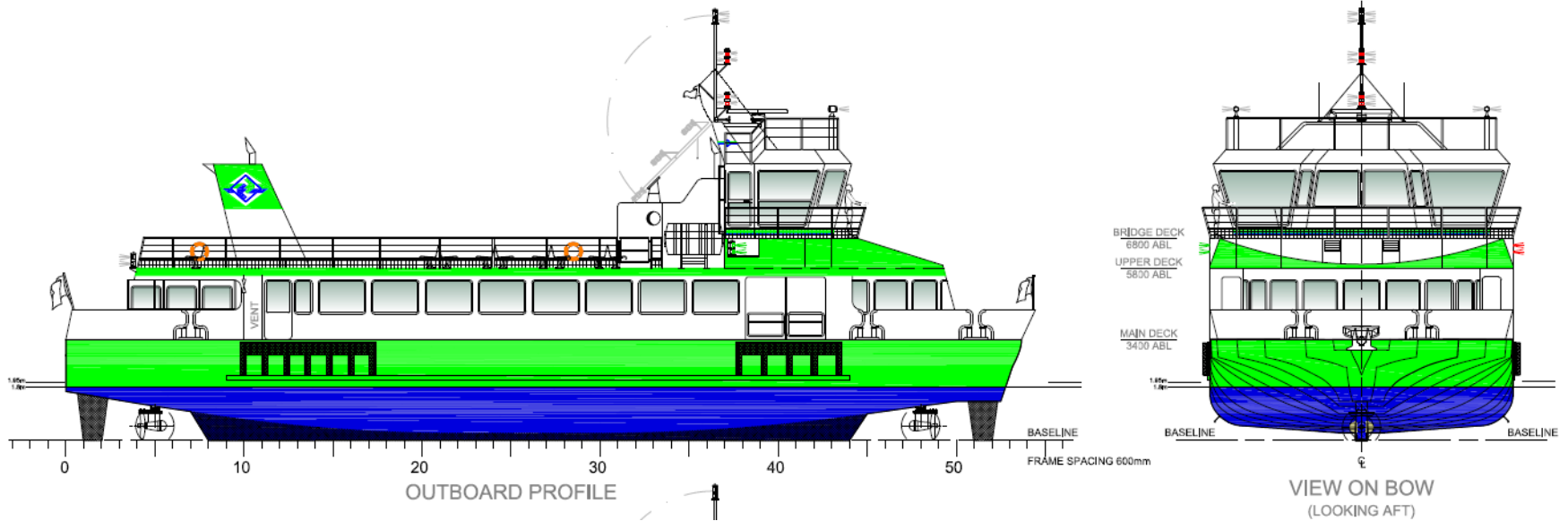




# Shipyard's new Projects – delivery 2014

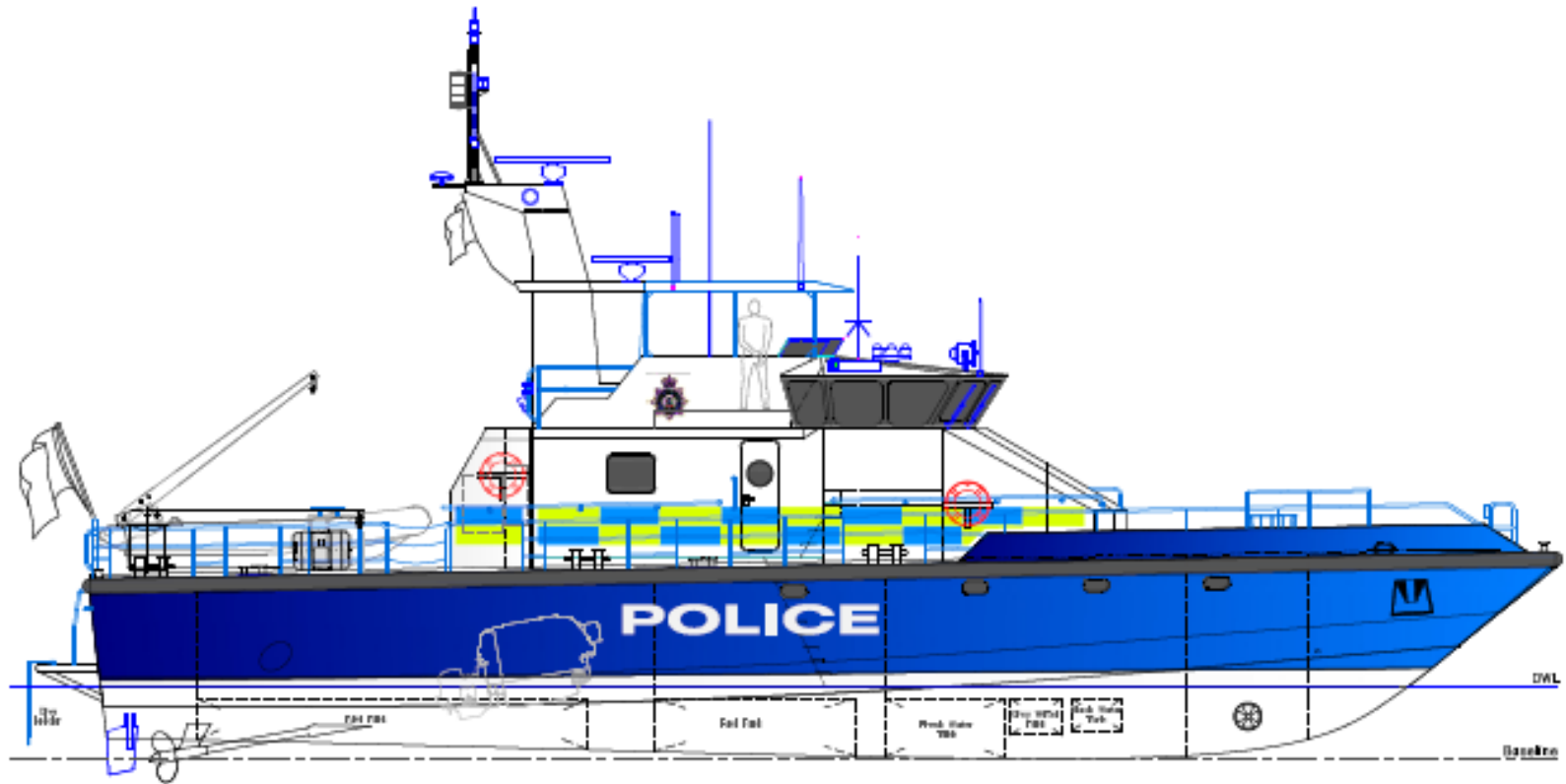
# GR. 98 – Gosport Ferry Ltd (UK)

- 33 m Passenger Ferry



# GR. 97 – Royal Gibraltar Police

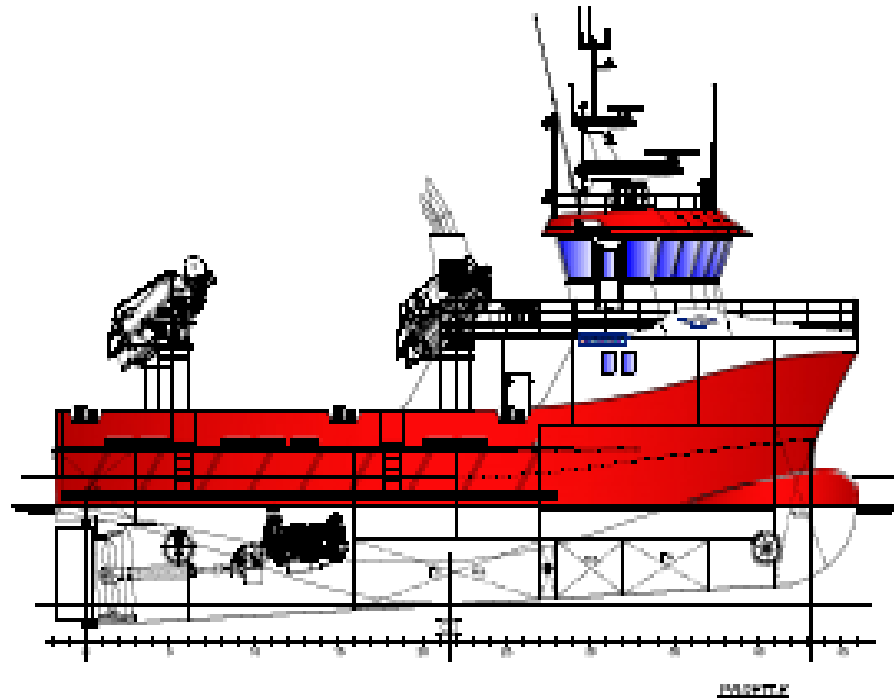
- 25m Law Enforcement Vessel





# Shipyard's New Projects – delivery 2015

# Moen Marin – 24m Service Vessel for Fish Farming



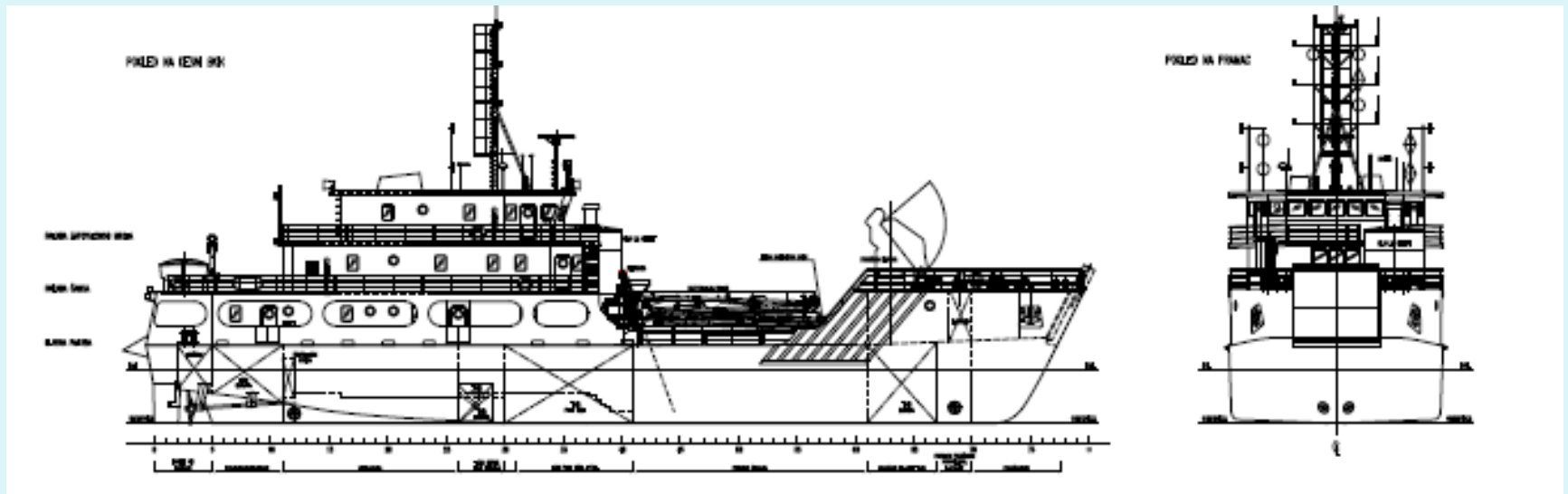




# **Anticipated New Projects**

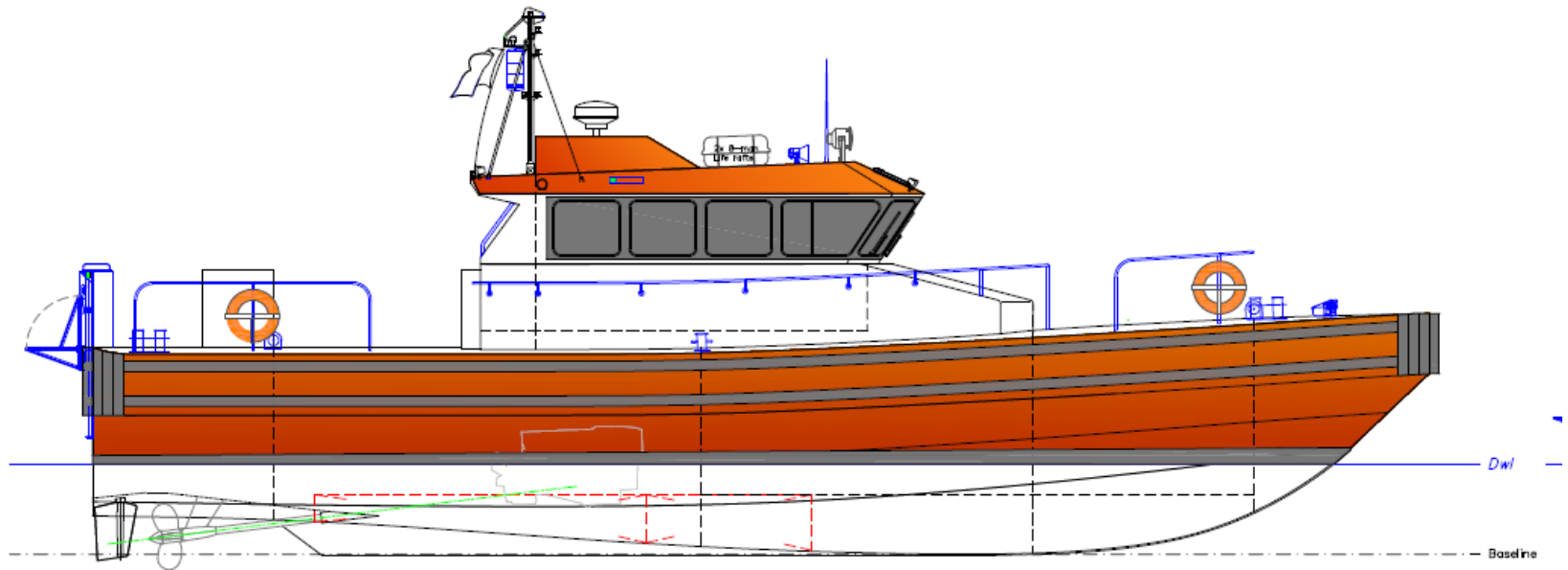
# Plovput doo Split

- 48,20 m Steel Working Boat with a Concrete Plant



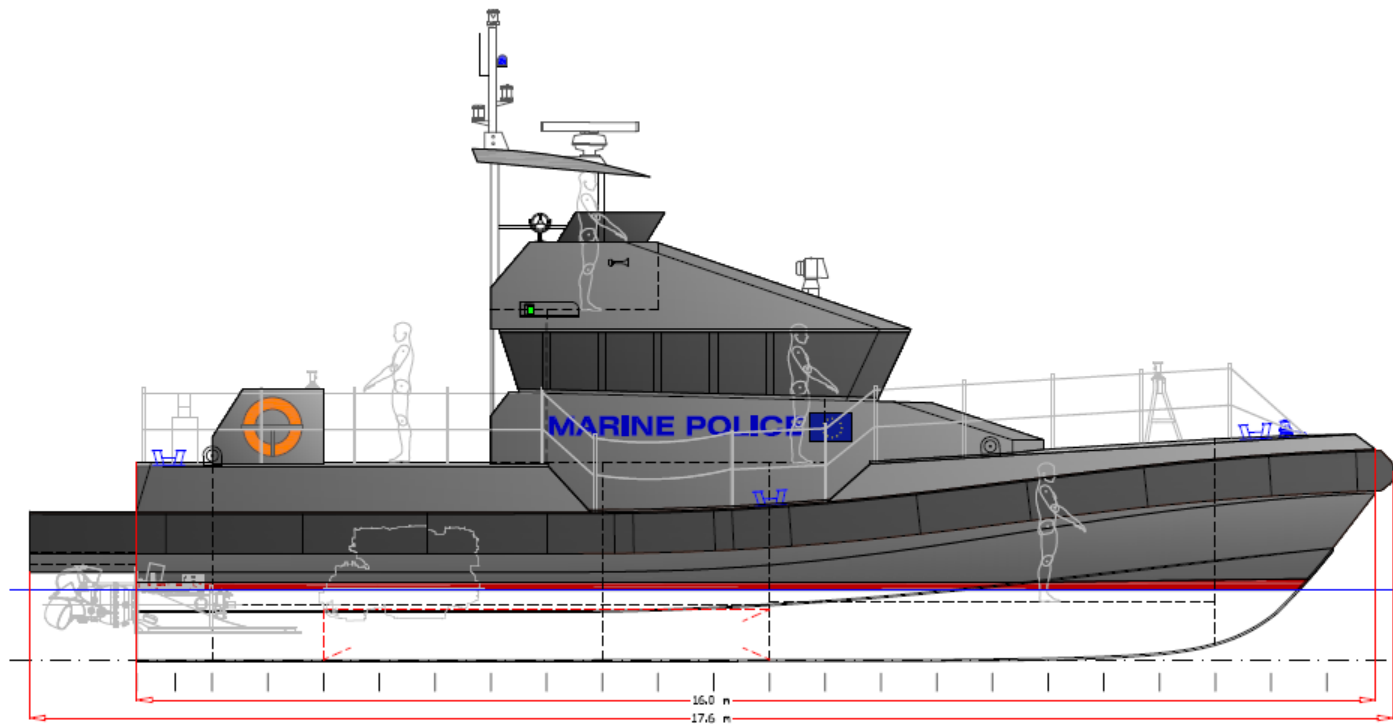
# New Projects

- 19m High Speed Service Boat for RAS TANOURAH (Saudi Arabia)



# New Projects

- 16m High Speed Patrol Boat for CYPRUS – 43 knots



# New Projects

- 40m HSC Catamaran Ferry for RED FUNNEL Ltd (UK)



# New Projects

- Dredgers for Turkmenistan





What else we can build...

# Patrol Boats CAMARC DESIGN



## **Dimensions**

Overall Length	11.99m
Beam Overall	3.7m
Draught	0.9m

## **Propulsion**

Main Engines	Twin Cummins QSB 5.9
Rating	480hp
Twin Waterjet	Ultra 305

## **Material**

Hull Structure	Aluminium
Superstructure	Aluminium

## **Performance**

Speed	38 knots
200 N Miles @	30 Knots

# Patrol Boats CAMARC DESIGN



## **Dimensions**

Overall Length	11.60m
Waterline Length	9.60m
Beam Overall	3.60m
Draught	0.70m

## **Propulsion**

Main Engines	Twin Yanmar 6LPA-STP2
Rating	235kW (315hp)
Twin Waterjet	Ultra 305
Twin Sterndrive	Yanmar ZT350

## **Material**

Hull Structure	Aluminium
Superstructure	Aluminium

## **Performance**

Speed (Waterjets)	33 knots
Speed (Sterndrive)	37 knots
Range 175 N Miles @ 25 Knots	

# Patrol Boats CAMARC DESIGN



## **Dimensions**

**Overall Length** 13.6m (44.5)

**Beam Overall** 4.2m (13.7')

**Draught** 0.9m (3.0')

**Self-Righting Boat.**

## **Propulsion**

**Main Engines** Detroit Diesel -MTU 60 series.

**Rating** 825hp (615kW)

**Twin Waterjets** Rolls Royce - Kamewa FF 375S  
Vector stick integrated joystick control.

## **Material**

**All aluminium construction**

## **Performance**

**Speed, full load** 43 knots

**Fuel Capacity** 1870 litres

# Patrol Boats CAMARC DESIGN



## **Dimensions**

<b>Overall Length</b>	18.0m (59')
<b>Waterline Length</b>	16.0m (52.5')
<b>Beam Overall</b>	4.7m (15.4')
<b>Draught</b>	1.1m (3.6')

## **Propulsion**

<b>Main Engines</b>	Twin MAN 12V
<b>Rating</b>	730hp
	Twin fixed pitch propellers

## **Material**

<b>Hull Structure</b>	Steel
<b>Superstructure</b>	Aluminium

## **Performance**

<b>Speed</b>	23 knots
--------------	----------

# Patrol Boats CAMARC DESIGN



## **Dimensions**

Overall Length	20.20m
Waterline Length	17.30m
Beam Overall	5.00m
Draught	1.5m

## **Propulsion**

Main Engines	Twin MTU 10V2000 M72
Rating	900kW 1205mhp @ 2250 rpm
Twin Fixed Propellers	

## **Material**

Hull Structure	Aluminium
Superstructure	Aluminium

## **Performance**

Speed	37 Knots
Fuel Capacity	7200 litres

# Dredgers



# Tug Boats McDUFF SHIP DESIGN



Type	Tug Boat
Length OA	16 m
Beam	6,2 m
Propulsion	2 x 800 HP
Bollard Pull	23 t
Speed	12 knots

# Tug Boats McDUFF SHIP DESIGN



Type	Tug Boat
Length OA	19 m
Beam	8,2 m
Propulsion	2 x 1040 kW
Bollard Pull	32 t
Speed	11,4 knots

# Tug Boats McDUFF SHIP DESIGN



Type	Tug Boat
Length OA	23 m
Beam	8,0 m
Propulsion	2 x 1300 kW
Bollard Pull	35 t
Speed	11,7 knots

# Tug Boats McDUFF SHIP DESIGN



Type	Tug Boat
Length OA	30 m
Beam	11,0 m
Propulsion	2 x 1330 kW
Bollard Pull	44,7 t
Speed	13 knots



Certificates, Approvals and Awards...

# Quality Assurance Certification

- **ISO 9001:2008** - Management System is certified in accordance with the requirements of the management system standards by Bureau Veritas
- **ISO 14001:2004** – Environmental Management System is in the process of Certification by Bureau Veritas
- **OHSAS 18001:2007** – Safety Management System is in the process of Certification by Bureau Veritas



# Certificates & Approvals

- **Bureau Veritas** – Recognition for BV Mode II Scheme – Welding and building of different ship and ship structure of steel and aluminium alloy
- **Croatian Register of Shipping** – Certificate of approval of the Manufacturer – shipbuilding steel and aluminium alloy
- **GSI SLV** – for execution and constructor's qualification of steel components acc. To EN 1090-2:2008+A1:2011

<b>Gesellschaft für Schweißtechnik International mbH</b> Schweißtechnische Lehr- und Versuchsanstalt SLV München		
<h2>Welding Certificate</h2> <p><b>GSIMü-EN1090-2.00236.2014.001</b></p> <p>in accordance with EN 1090-1, table B.1, its hereby declared: The manufacturer has produced evidence that he fulfills the requirements of the European standard EN 1090-2 for execution of structural steel components</p>		
<b>Manufacturer</b>	<b>TEHNOMONT Brodogradiliste Pula d.o.o.</b> <b>Fizela 6</b> <b>HR 52100 Pula</b>	
<b>Technical specification</b>	<b>EN 1090-2:2008+A1:2011</b>	
<b>Execution class(es)</b>	<b>EXC2 according to EN 1090-2</b>	
<b>Welding Process(es)</b> <small>(Reference no. acc. to DIN EN ISO 4063)</small>	111, 121 (fully mechanized), 135 (partly mechanized), 136 (partly mechanized)	
<b>Material Group</b>	1.1.1.2 according to CEN ISO/TR 15608 and EN 1090-2, table 2 and 3	
<b>Responsible Welding Coordinator</b> <small>(Title, Surname, Name, Qualification, Date of birth)</small>	Milan Bivic, IWE	born on: 26.11.1970
<b>Substitute</b> <small>(Title, Surname, Name, Qualification, Date of birth)</small>	Davor Plisko, IWE	born on: 10.12.1978
<b>Confirmation</b>	All provisions concerning welding as described in the above mentioned technical specification(s) were applied.	
<b>Validity start</b>	05.02.2014	
<b>Period of validity</b>	05.02.2017	
<b>Remarks</b>	see reverse	
<b>Place and issue date</b>	München, 10.02.2014 Haberberger/ha	 <b>Westermair</b> <small>Deputy of head of body certification office</small>
<small>GSI – Gesellschaft für Schweißtechnik International mbH, Niederlassung SLV München, Schachenmeierstraße 17, 80636 München Tel.: +49 89 126862-0, Fax: +49 89 181643, E-Mail: slv@gsv-muenchen.de, Internet: www.slv-muenchen.de</small>		
<small>DVS</small>		

# Welding Certificates



FAKULTET STROJARSTVA I BRODOGRADNJE  
Zavod za zavarene konstrukcije  
Odjel za certifikaciju FSB-ZK Cert

Ivana Lučića 1, 10002 Zagreb, Hrvatska  
OIB: 22918368449  
Tel: 00 385 1 6168 206 Fax: 00 385 1 6157 124  
E-mail: fsb-zk@fsb.hr Internet: www.fsb-uznag.hr/zavarka

CERTIFIKAT  
O SPOSOBNOSTI ZA IZVOĐENJE ZAVARIVAČKIH RADOVA  
PREMA HRN EN ISO 3834-3

Br.: FSB ZK -3834-3-2014-001

Proizvođač: **TEHNOTOM- BRODOGRADILISTE PULA d.o.o.**  
Adresa: **52000 Pula, Fizela 6**  
Proizvodni pogon: **na istoj adresi.**  
Vrsta proizvoda: **čelične konstrukcije u (izradi i montaži)**  
Pojediniosti proizvodnje: **na poledini ovog certifikata.**  
Vrijedi od: **05.02.2014.**  
Nadzorni pregled: **05.02.2015.**  
Vrijedi do: **Ovaj certifikat je valjan dok ne nastupe značajne promjene u sustavu proizvodnje zavarivanjem.**  
Napomene: **Konačno izvješće br. FSB ZK-3834-3-2014-001- Tehnomont - Brodogradilište Pula**  
Mjesto i datum izdavanja: **Zagreb, 17.02.2014.**

Voditelj Odjela za certifikaciju:  
Prof.dr.sc. Slobodan Kraj

FSB-ZK Cert

RN 111171307100 -3

ZAVOD ZA ZAVARENE KONSTRUKCIJE  
FAKULTETA STROJARSTVA I BRODOGRADNJE  
ODJELA ZA CERTIFIKACIJU IZ OBLASTI  
STROJARSTVA I PROMETA  
Z.A.O.H.E.B., Ivana Lučića 1




## INTERNATIONAL INSTITUTE OF WELDING

**Having satisfied the requirements of the IIW  
Manufacturer Certification Scheme for the  
Management of Quality in Welding**

The Unit: Tehnomont-Brodogradilište Pula  
Located in: HR 52000 Pula, Fizela 6  
Company: **Tehnomont- Brodogradilište Pula d.o.o.**

is certified in accordance with  
**ISO 3834 Part 3 – Doc. IAB 337**

For the product(s): steel structures

with the scope of work: stated in the attached Schedule  
Certificate number and revision status: 1404 – Rev. 0  
First Issue date: 05.02.2014.  
Current issue date: 05.02.2014.  
Date of expiry: 05.02.2015.

ANBCC Governing Board Representative  
*[Signature]*  
Franjo Javor, dipl. ing.

Scheme Manager  
*[Signature]*  
Prof dr.sc. Slobodan Kraj

Department of Welded Structures 1  
Faculty of Mechanical Engineering and Mechanical  
Architecture, University of Zagreb




This Certificate is subject to the rules established by IIW  
for the certification of Companies




## IIW Manufacturer Certification Scheme

### SCHEDULE

Extent of validity of IIW Certificate N° 1404 Rev. 0

Product standard(s):  
HRN EN 1090  
other according  
contract

Alternative Standard(s) (refer to ISO 3834 – 5)  
other according  
contract

Welding process (ISO 4063)	Parent material groups (ISO/tr 15608)
111	1.2
135	1.36
141	

Responsible Coordination Personnel:		
Name	Qualification	Job function and level**
Milan BIČIĆ	IWE/CIWE	Coordinator- level 1
Davor Pliško	IWE	Deputy to coordinator-level 1
Žilko ŠOŠIĆ	EWS.	Assist. to coordinator-level 3
Nenad MATANA	IWS	Assist. to coordinator-level 3

\*\*\* The level must be stated in order to comply with ISO 14731

ANBCC Governing Board Representative  
*[Signature]*  
Franjo Javor, dipl. ing

Scheme Manager  
*[Signature]*  
Prof dr.sc. Slobodan Kraj

ZAVOD ZA ZAVARENE KONSTRUKCIJE  
FAKULTETA STROJARSTVA I BRODOGRADNJE  
ODJELA ZA CERTIFIKACIJU IZ OBLASTI  
STROJARSTVA I PROMETA  
Z.A.O.H.E.B., Ivana Lučića 1




The standards and documents referred in the certificate and  
schedule are those valid at the time of certification

# IWE Certificates and Diplomas

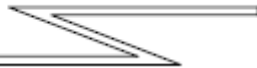


# Ship Designers



**BRODARSKI INSTITUT**

◦ **CAMARC DESIGN** ◦



MACDUFF SHIP DESIGN Ltd. 4 LAING STREET MACDUFF  
ABERDEENSHIRE SCOTLAND AB44 1RB  
TEL 01261 833825 FAX 01261 833835  
EMAIL [enquiries@msdl.demon.co.uk](mailto:enquiries@msdl.demon.co.uk)

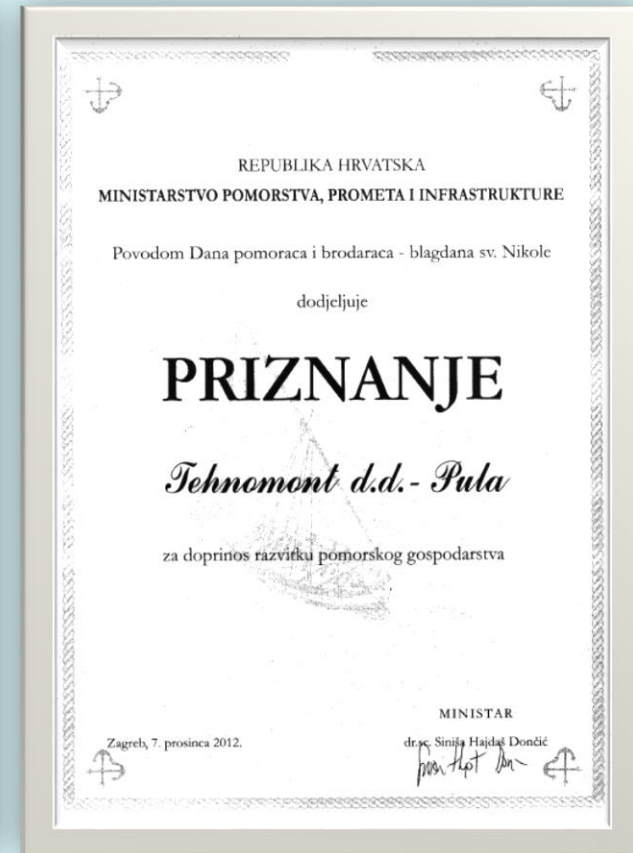
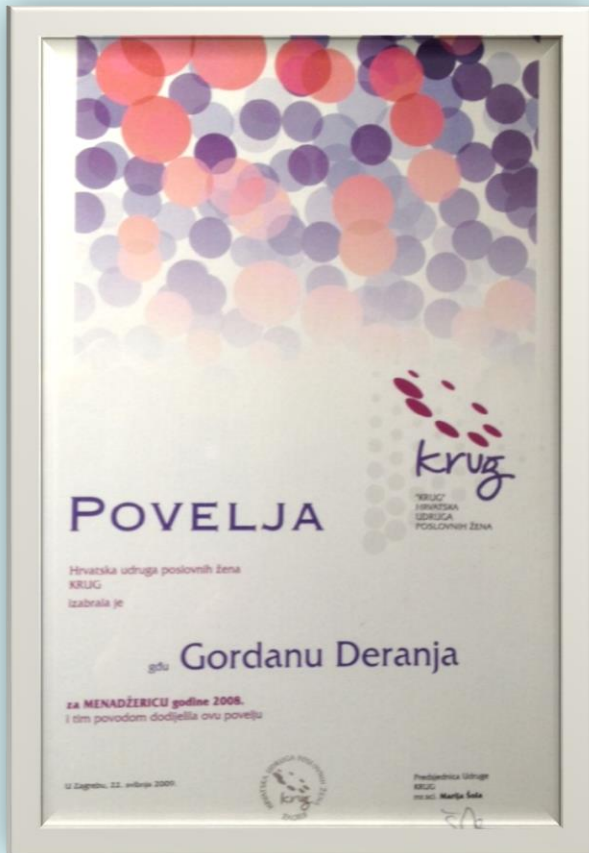


SHIP PROJECTS ENGINEERING & CONTRACTING

**R**uce  
oberts *Europe B.V.*



# Awards



**Thank you for your attention**